

FieldMonitor* Configuration Software for RSLogix5™

Bently Nevada* Asset Condition Monitoring

Description

The FieldMonitor* Configuration Software for RSLogix5™ is a software package we developed to configure the FieldMonitor system and view data from the FieldMonitor system **only** when using an Allen-Bradley (A-B) PLC-5™ controller with RSLogix5™ Configuration Software. RSLogix5™ software is the Rockwell Automation software used to configure a PLC-5™ controller. The FieldMonitor Configuration Software for RSLogix5™ can be used where the industrial network between the PLC-5™ and the FieldMonitor is either ControlNet™ or A-B Remote I/O™.

When using FieldMonitor Configuration Software for RSLogix5™, FieldMonitor configuration options are selected by clicking in the desired boxes or typing in a value from a windows-based screen within RSLogix5™. See example configuration screen capture.

Two software options are available for use with the FieldMonitor System and RSLogix5™:

User package - used by end-users to configure their own FieldMonitor Systems.

Integrator package - used by system integrators to configure the FieldMonitor Systems for their customers.

Note: This software can only be used with PLC-5™ controllers and RSLogix5™ software. FieldMonitor can be used with many other controllers. For more information on the data structures to integrate FieldMonitor with these products contact your local sales or service professional.



imagination at work

Specifications and Ordering Information
Part Number 141613-01
Rev. B (05/12)

Page 1 of 3

Specifications

Computer Requirements

- Pentium, Pentium-compatible, or 486 microprocessor
- 32 MB or more of RAM
- SVGA color monitor
- 2 MB of unused hard disk space
- 4.7" 700 MB Compact Disk, Config Software for RSLogix5 (for installation).
- Microsoft Windows 95 or NT 4.0, or later operating systems

The following Rockwell Software Inc. products must be installed on the computer before you install the 1701 software: RSLogix™, RSLinx™, and RSNetworx™.

Ordering Information

FieldMonitor Configuration Software for RSLogix5™

1701/01-XX

Option Descriptions

Note: 1701/01-01 and -02 options include 1701/20-01 one-year single package support agreement.

- 01 User Package
- 02 Integrator Package

Technical Support Agreements

1701/20-XX

Option Descriptions

- 01 1-year single package technical support agreement
- 02 1-year multiple package technical support agreement
- 03 2-year single package technical support agreement
- 04 2-year multiple package technical support agreement
- 05 3-year single package technical support agreement
- 06 3-year multiple package technical support agreement
- 07 4-year single package technical support agreement
- 08 4-year multiple package technical support agreement
- 09 5-year single package technical support agreement
- 10 5-year multiple package technical agreement

Screen Capture

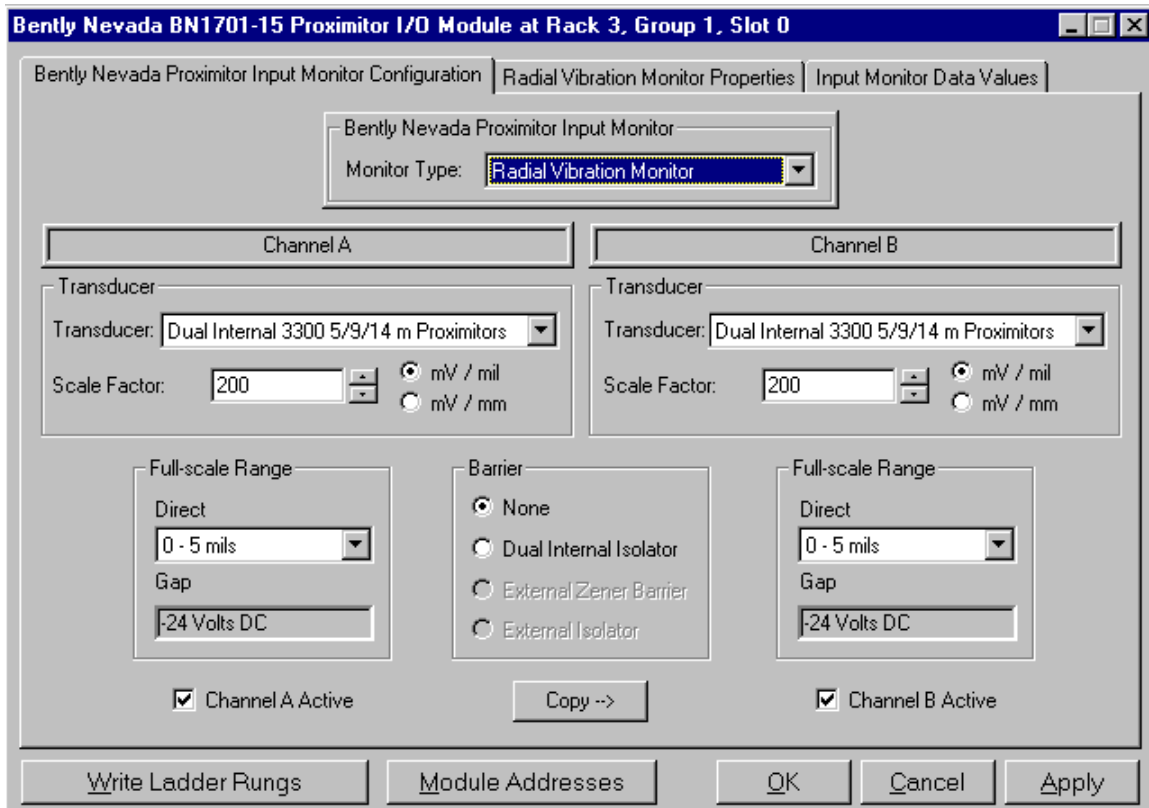


Figure 1: Sample Configuration Screen

* Denotes a trademark of Bently Nevada, Inc., a wholly owned subsidiary of General Electric Company.

RSLogix™, RSLinx™, RSNetwork™, PLC-5™, A-B Remote I/O™, and ControlNet™ are trademarks of Rockwell Automation.

© 2000 – 2012 Bently Nevada, Inc. All rights reserved.

Printed in USA. Uncontrolled when transmitted electronically.

1631 Bently Parkway South, Minden, Nevada USA 89423

Phone: 775.782.3611 Fax: 775.215.2873

www.ge-mcs.com/bently