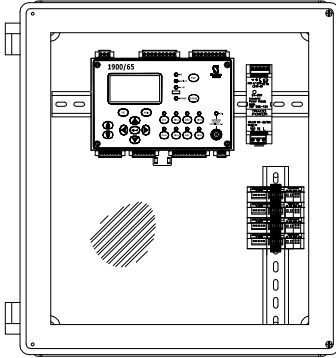


# 1900/65 Trendmaster® DSM Interface Kit

## Bently Nevada™ Asset Condition Monitoring

### Description

This hardware kit provides the necessary parts to interface the outputs from the 1900/65 general purpose equipment monitor to System 1® our flagship optimization and diagnostic software, through a Trendmaster® Dynamic Scanning Module (DSM) interface. The buffered outputs from the 4 vibration channels on the 1900/65A can either be wired directly into the -24V transducer input card on the DSM or through rack buffered output transducer interface modules (TIMs) where a signal processing adapter (SPA) line would connect the TIMs to the DSM. If temperature points are required, the 4-20mA outputs from the 4 temperature channels on the 1900/65 can be wired directly to a process variable input card on the DSM or to process variable TIMs for a Trendmaster SPA line connection. Either of these connection types from the 1900/65A to the Trendmaster DSM will provide the required interface to System 1 for the 1900/65A data.



### Kit Contents

Depending on the kit options that are ordered, the following hardware items are provided:

- Fiberglass NEMA type 4X / IEC 529 IP 66 housing with viewing window in cover. A clear anodized-aluminum mounting panel is included.
- Slotted DIN Rail for hardware mounting.
- Up to 4 Rack Buffered Output (Vibration) Transducer Interface Modules (TIMs).
- Up to 4 Process Variable (PV) TIMs for temperature points. Includes a 24 VDC power supply to provide loop power to the PV TIMs.
- IDC ribbon cable to connect TIMs.
- IDC termination hand tool.
- 22 AWG twisted shielded pair to connect 1900/65 buffered outputs to TIMs and 22 AWG stranded conductors to connect 1900/65 4-20mA output to TIMs.
- Required fasteners to secure DIN rail to mounting panel and panel to the housing.
- Installation drawing (document number 172368)

**Note:** The 1900/65 and the Trendmaster DSM are not included in this kit. These items must be ordered separately.

**Warning:** For hazardous area installations, the 1900/65 and DSM must be ordered with the approvals option. Customer is responsible for following the hazardous area wiring methods and labeling the system during the installation.

---

## Supported Transducer Interface Modules (TIMs)

Part Number	Description
101281	Rack Buffered Output TIM
85014	Process Variable TIM

---

## Ordering Information

### Weatherproof Housing (Axx)

#### 1900/65\_TIM\_KIT - Axx - Bxx - Cxx

A NEMA 4X / IP 66 fiberglass housing can be ordered with the 1900/65\_TIM\_KIT.

A00	No Housing Required
A01	Housing Provided

---

### Number of RBO TIMs (Bxx)

The 1900/65\_TIM\_KIT can be ordered with up to four Rack Buffered Output TIMs.

B00	No TIMs Required
B01	1 RBO TIM Provided
B02	2 RBO TIMs Provided
B03	3 RBO TIMs Provided
B04	4 RBO TIMs Provided

### Number of PV TIMs (Cxx)

The 1900/65\_TIM\_KIT can be ordered with up to four Process Variable TIMs.

C00	No TIMs Required
C01	1 PV TIM Provided
C02	2 PV TIMs Provided
C03	3 PV TIMs Provided
C04	4 PV TIMs Provided

Reference 1900/65A Trendmaster DSM, System 1, and TIM datasheets for further information.

---

## Installation Overview

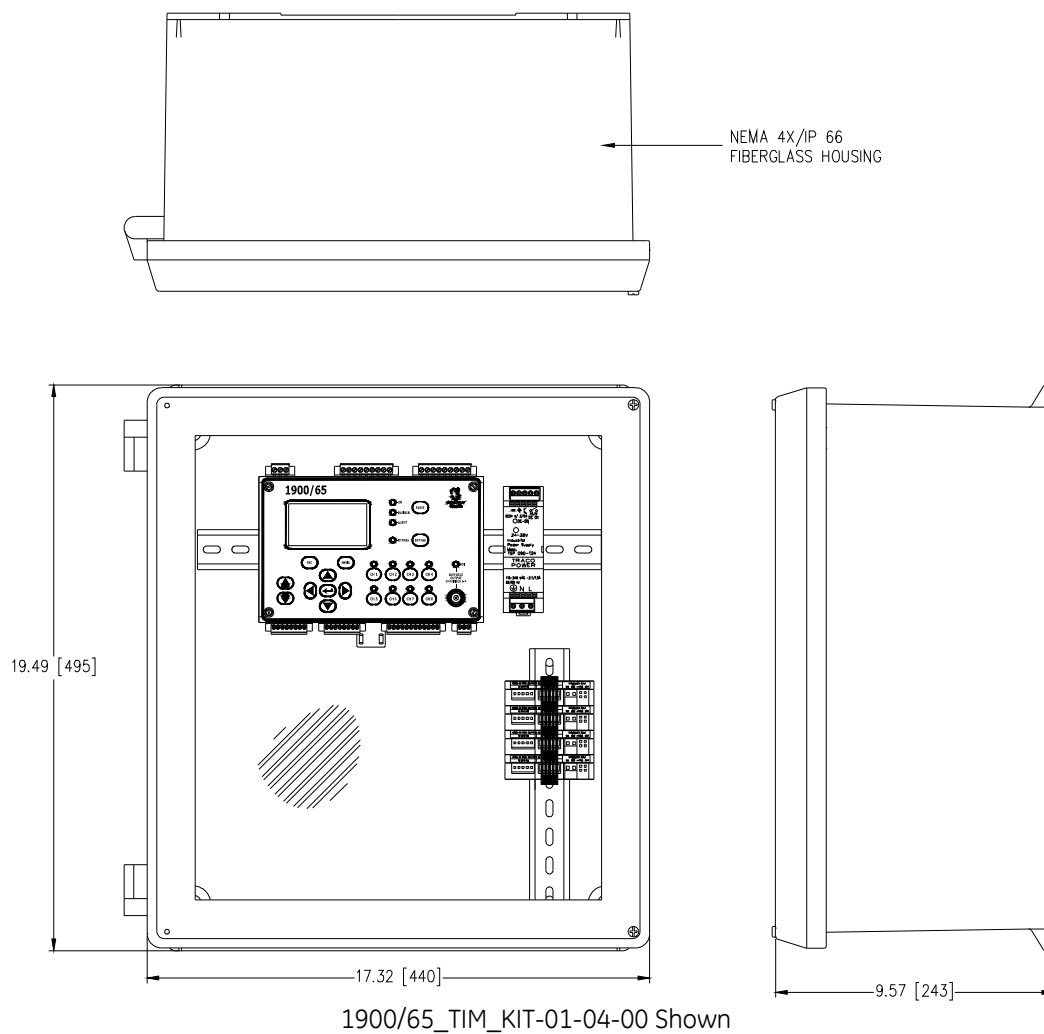
Refer to drawing 172368 that shows the assembly and wiring of the kit when the A01 option is ordered. If you have an existing housing or cabinet with a 1900/65, the TIMs and supporting hardware would need to be installed in a similar manner.

---

## Hardware Required for Assembly and Installation

- 1900/65 with DIN Rail or Bulkhead mounting option.
- Trendmaster DSM with DIN Rail mounting and the associated input card(s) for the wiring setup described above:
  - 149787-01: Trendmaster TIM line input card when using the RBO and PV TIMs with a SPA line.
  - 149811-01: -24V Transducer input card for a 1900/65 buffered output connection directly to the DSM.
  - 149799-01: 4-20mA input card for a 1900/65 4-20mA output connection directly to the DSM.
- Screwdrivers
- Wire cutter and stripper
- Hole saw or punch
- Conduit hubs (or cable seals)
- Trendmaster system cable (pn 85033)

## Graphs and Figures



**Figure 1**

Copyright 2005. Bently Nevada LLC.  
1631 Bently Parkway South, Minden, Nevada USA 89423  
Phone: 775.782.3611 Fax: 775.215.2873  
[www.ge-energy.com/bently](http://www.ge-energy.com/bently)  
All rights reserved.

Bently Nevada, System 1 and Trendmaster are trademarks of General Electric Company.