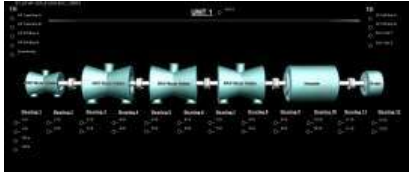


# System 1\* for Power Generation

## Bently Nevada\* Asset Condition Monitoring



Steam Turbine Generators



Aero-Derivative Generators



Heavy Duty Gas Turbine Generators



Balance of Plant

### Description

System 1\* for Power Generation delivers a pre-licensed System 1 package (point size and interfaces) that is designed to meet the needs of power generators. The power generation scoped packages are meant to provide a whole System 1 software solution with a recommendation of defined scoped Services in an easy to quote package that is based on MW output of the plant.

The System 1 for Power Generation packages include licensing, tools, and procedures to reduce the cost of deployment and enable consistency between installations within a power generator's production assets.

The procedures include a *Style Guide (286621)*, *Plot Session Guide (286622)*, and machine train templates.

Licenses for 3500 rack points, TDE points, Historian, Trendmaster\* Pro, Essential Insight.mesh\*, Snapshot\* are included as well as licenses for State Based Analysis, Smart Notifier and simple Rule Logic Results in one package that is deployed initially and can be expanded without activation upon the addition of the Hardware.

### Benefits

System 1 delivers an asset condition monitoring platform that enables reliability centered maintenance and coordination among multiple condition monitoring and protection platforms that allows end-users to:

- Extend time between planned outages
- Reduce the duration of planned outages
- Maximize an asset's useful life while optimizing its maintenance and operating costs
- Minimize unplanned outages and downtime
- Reduce unplanned catastrophic equipment failures
- Reduce unnecessary maintenance
- Lower emissions and increasing efficiency while maintaining full MW capacity

System 1 for Power Generation packaging offers a set of flexible, scalable condition monitoring platform solutions that meets the condition monitoring management needs of small power producers and mega-power producers. Our new packaged offering allows Power Generation plant sites to cost effectively realize the benefits of System 1 with deployment guidelines that simplify managing multiple power generation assets at one site as well across multiple sites by providing a consistent look and feel for asset screens and plotting tools.

Now, power generation customers can expand Reliability Centered Maintenance (RCM) plant-wide from Critical Assets to Essential Assets (low-mid criticality balance of plant equipment). These new Power Generation packages provide all the points and application packages you need for your basic condition monitoring for all the assets within a power generation facility.

## Specifications

### Points Included with Packages

Pre-packaged quantities of licenses listed in are packaged and included in packages based on plant MW size

<b>3060/80</b>	<b>-01</b>	<b>-02</b>	<b>-03</b>	<b>-04</b>
System-1 Software & Licenses	1	1	1	1
Turbo Machinery Package	1	1	1	1
Portable Data Collector Package	1	1	1	1
Trendmaster EI Package	1	1	1	1
System-1 Display	5	5	5	5
System-1 Data Acquisition	1	1	1	1
MS SQL Server	1	1	1	1
TDI System-1 Data Importers (Transient)	X <sup>1</sup>	X <sup>2</sup>	X <sup>3</sup>	X <sup>4</sup>
TDI System-1 Data Importers (Steady State)	X <sup>1</sup>	X <sup>2</sup>	X <sup>3</sup>	X <sup>4</sup>
TDE System-1 Data Importers (Transient)	X <sup>1</sup>	X <sup>2</sup>	X <sup>3</sup>	X <sup>4</sup>
TDE System-1 Data Importers (Steady State)	X <sup>1</sup>	X <sup>2</sup>	X <sup>3</sup>	X <sup>4</sup>
Dynamic Channels Non-TDI&Tde	X <sup>1</sup>	X <sup>2</sup>	X <sup>3</sup>	X <sup>4</sup>
System-1 DCS Historian	X <sup>1</sup>	X <sup>2</sup>	X <sup>3</sup>	X <sup>4</sup>
BN Monitor Static Channel	X <sup>1</sup>	X <sup>2</sup>	X <sup>3</sup>	X <sup>4</sup>
Trendmaster Pro Points	X <sup>1</sup>	X <sup>2</sup>	X <sup>3</sup>	X <sup>4</sup>
Wireless Dynamic Points (Wireless Static can be configured as Dynamic)	X <sup>1</sup>	X <sup>2</sup>	X <sup>3</sup>	X <sup>4</sup>
Wireless Gateway License	1	1	1	1
Portable Points	X <sup>1</sup>	X <sup>2</sup>	X <sup>3</sup>	X <sup>4</sup>
State Based Analysis (Unlimited)	X <sup>5</sup>	X <sup>5</sup>	X <sup>5</sup>	X <sup>5</sup>
Smart Notifier	X <sup>1</sup>	X <sup>2</sup>	X <sup>3</sup>	X <sup>4</sup>
Simple Rule Logic Results	X <sup>1</sup>	X <sup>2</sup>	X <sup>3</sup>	X <sup>4</sup>

### Table 1 Point Licenses for Packages

<sup>1</sup> Enough points of appropriate point types to cover up to a 200 MW plant.

<sup>2</sup> Enough points of appropriate point types to cover a 200 MW to 600 MW plant

<sup>3</sup> Enough points of appropriate point types to cover a 600 to 1400 MW plant

<sup>4</sup> Enough points of appropriate point types to cover a >1400 MW plant

<sup>5</sup> **Unlimited state based analysis points are provided.**

\*Denotes a trademark of Bently Nevada, Inc., a wholly owned subsidiary of General Electric Company.

© 2010 - 2011 General Electric Company.

Printed in USA. Uncontrolled when transmitted electronically.

1631 Bently Parkway South, Minden, Nevada USA 89423

Phone: 775.782.3611 Fax: 775.215.2873

[www.ge-mcs.com/bently](http://www.ge-mcs.com/bently)

## Ordering Information

### Product Description

**3060/80 - AXX**

**AA:** Supported MW of Enterprise (plant)

<b>01</b>	<200 MW
<b>02</b>	200-600 MW
<b>03</b>	600-1400 MW
<b>04</b>	>1400 MW